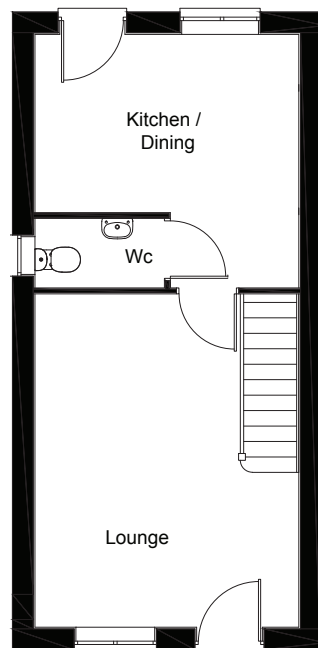
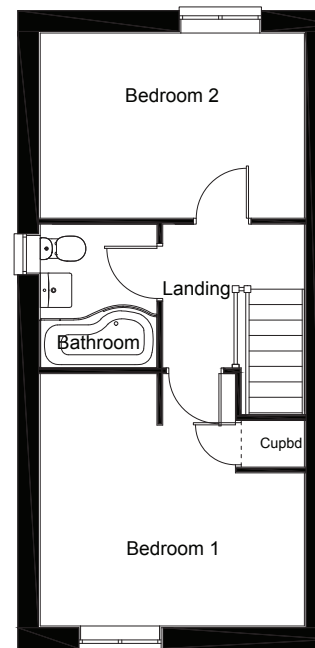


# THE JADE

## A TWO BEDROOM HOME



GROUND FLOOR



FIRST FLOOR



[CYDENHOMES.CO.UK](http://CYDENHOMES.CO.UK)

KITCHEN/DINING	3850 x 3697(MAX)	12'7" x 12'1"(MAX)
LOUNGE	4863 x 3850	15'11" x 12'7"
BEDROOM 1	3850 x 3680(MAX)	12'7" x 12'0"(MAX)
BEDROOM 2	3850 x 2700	12'7" x 8'10"
BATHROOM	2094 x 1700	6'10" x 5'6"

**CONSUMER  
CODE FOR  
HOME BUILDERS**

[www.consumercode.co.uk](http://www.consumercode.co.uk)

Whilst these particulars are prepared with due care for the convenience of the intending purchasers, the information contained therein is intended as a preliminary guide only. The photographs are of similar house types and may vary in terms of finish, detail and can be built in terraced, semi-detached or detached forms. Please ask your New Homes Sales Advisor for details. The right is expressly reserved by the company to amend or vary the same, and therefore nothing herein contained shall constitute or form part of any contract. The house type photograph is of a similar property.